

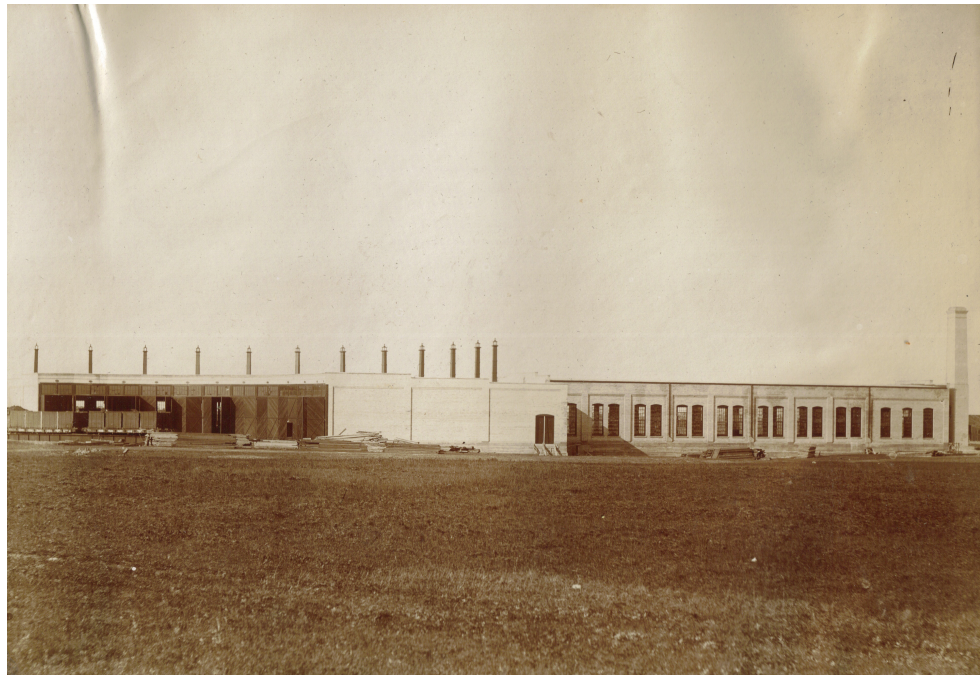
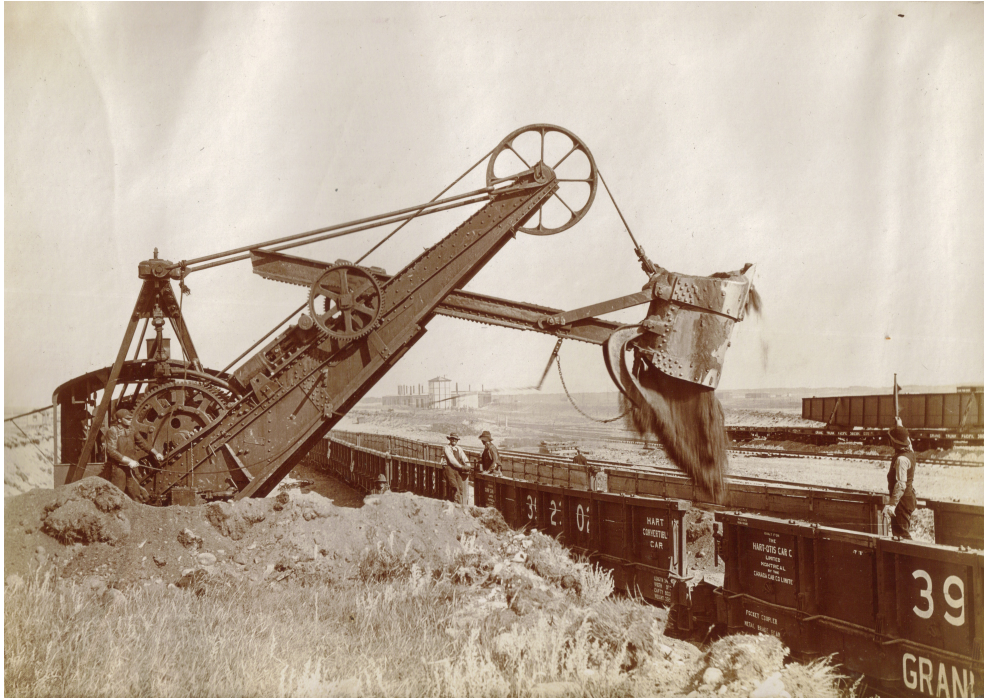
— PHOTOGRAPHS —
GRAND TRUNK PACIFIC
RAILWAY CONSTRUCTION.
— BY —
EDWIN C. BLAIR,
High Bluff, Manitoba.



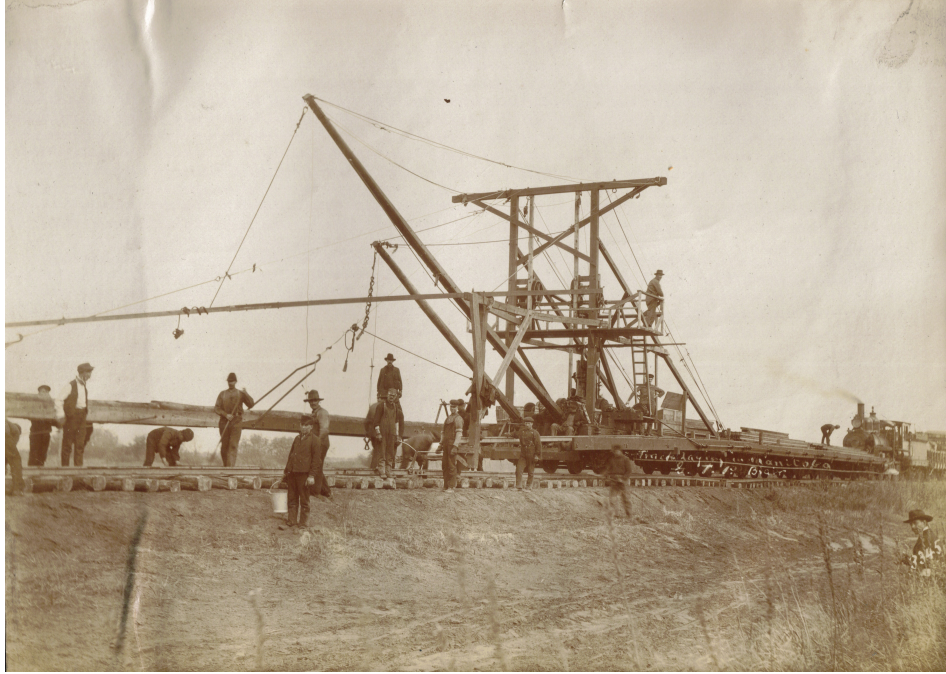


Rivers Station, July 30, 1909

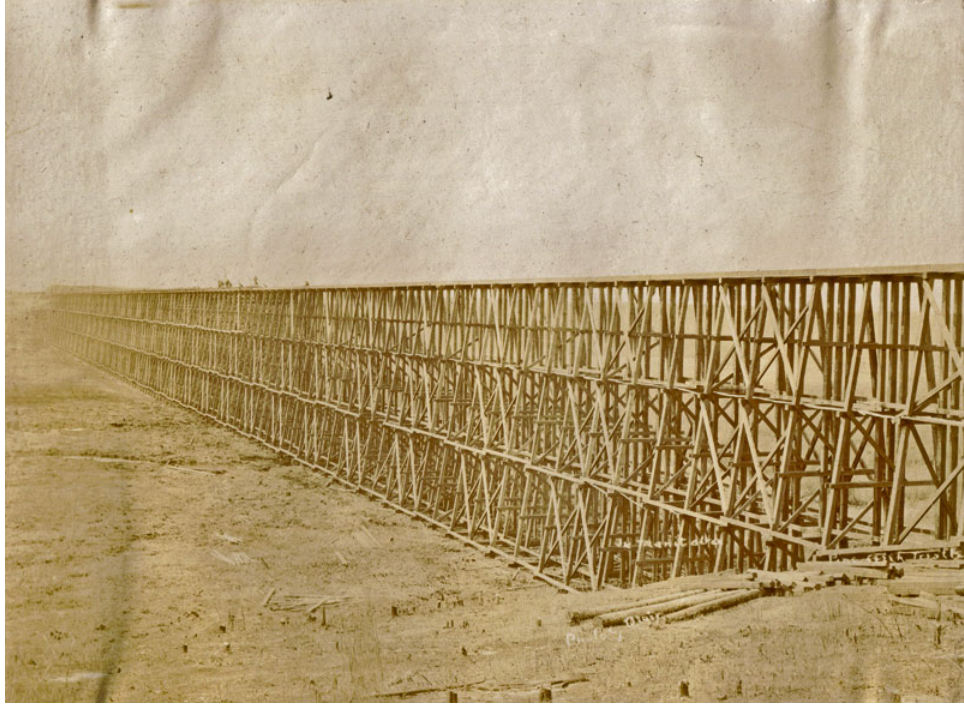




Roundhouse



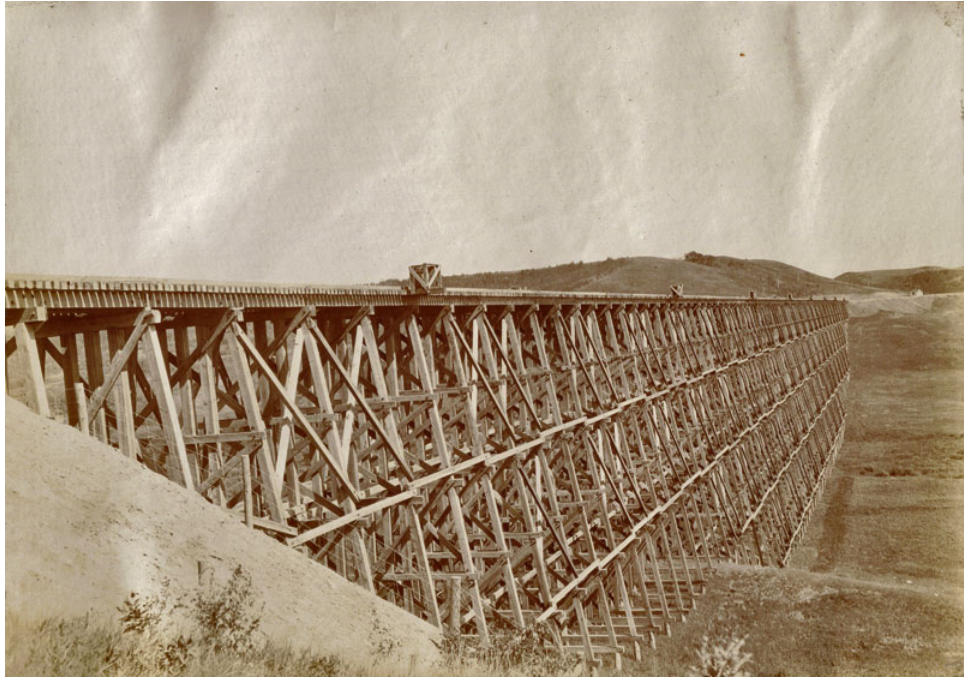
Melville Sk.



Pine Creek Trestle



Rivers Trestle



Cut Arm Sk.





Saskatoon Bridge



Big Fill in the Sand Hills. McDonald and McMillan Contractors

